



# NATIONAL

---

National Survey for the **National Ethnic Press and Media Council of Canada**

Field Dates: April 3-5, 2025

Release Date: April 6, 2025



# Ontario's **Most Accurate** **Polling Firm.**

Most accurate polling firm of the  
2025 Ontario Provincial Election.



Liaison surveyed a random sample of 1,500 Canadian voters through Interactive Voice Recording (IVR) from April 3rd to April 5th, 2025

Responses were weighted using demographic and geographic information to targets based on the 2021 Census.

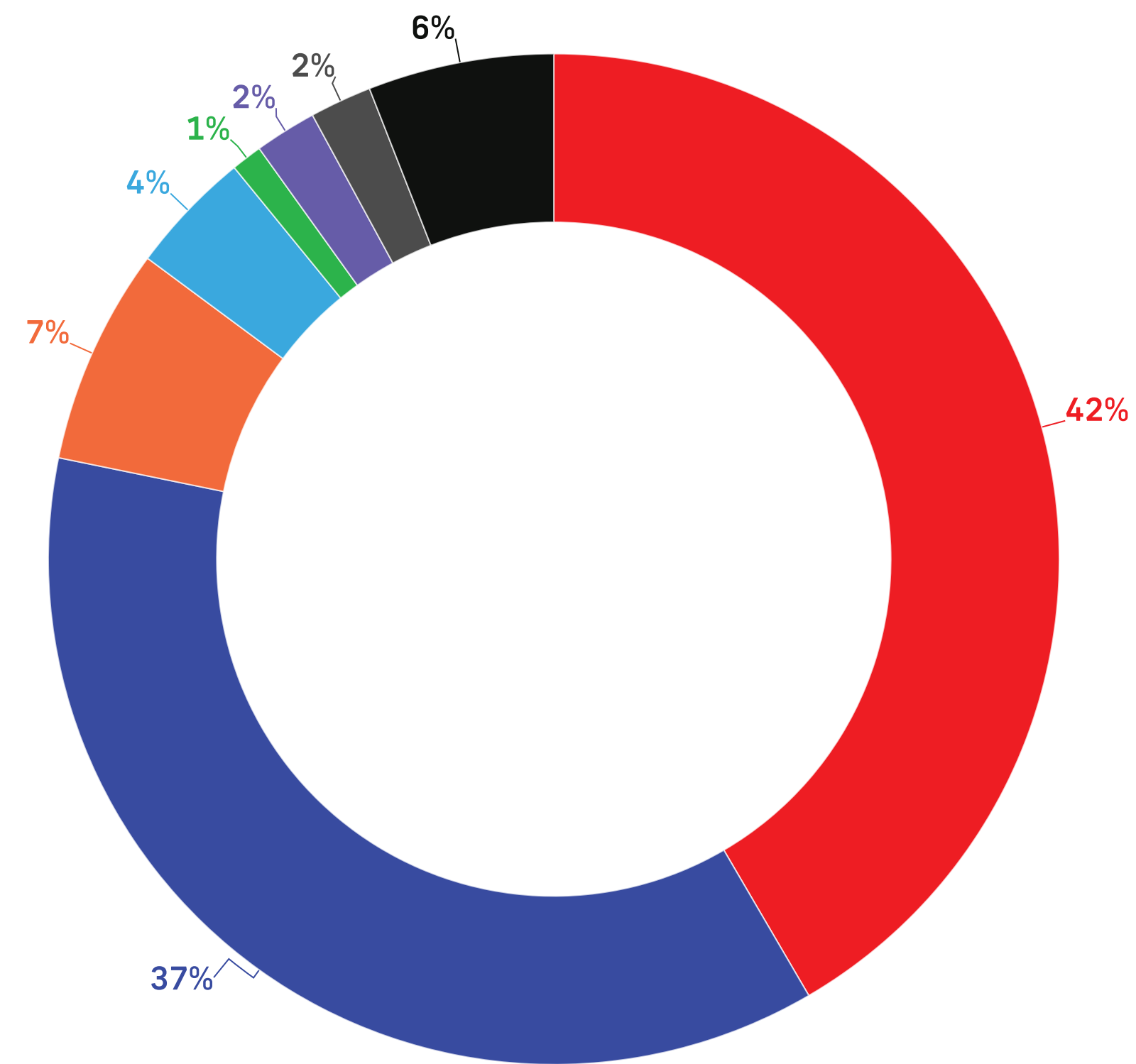
The margin of error for survey results is  $\pm 2.53$  percentage points, 19 times out of 20 for the total. Margin of error is higher for sub samples.

Results may not add up to 100 due to rounding.



## Voting Intent - National

Q: If a Federal Election were held today, which party would you vote for?

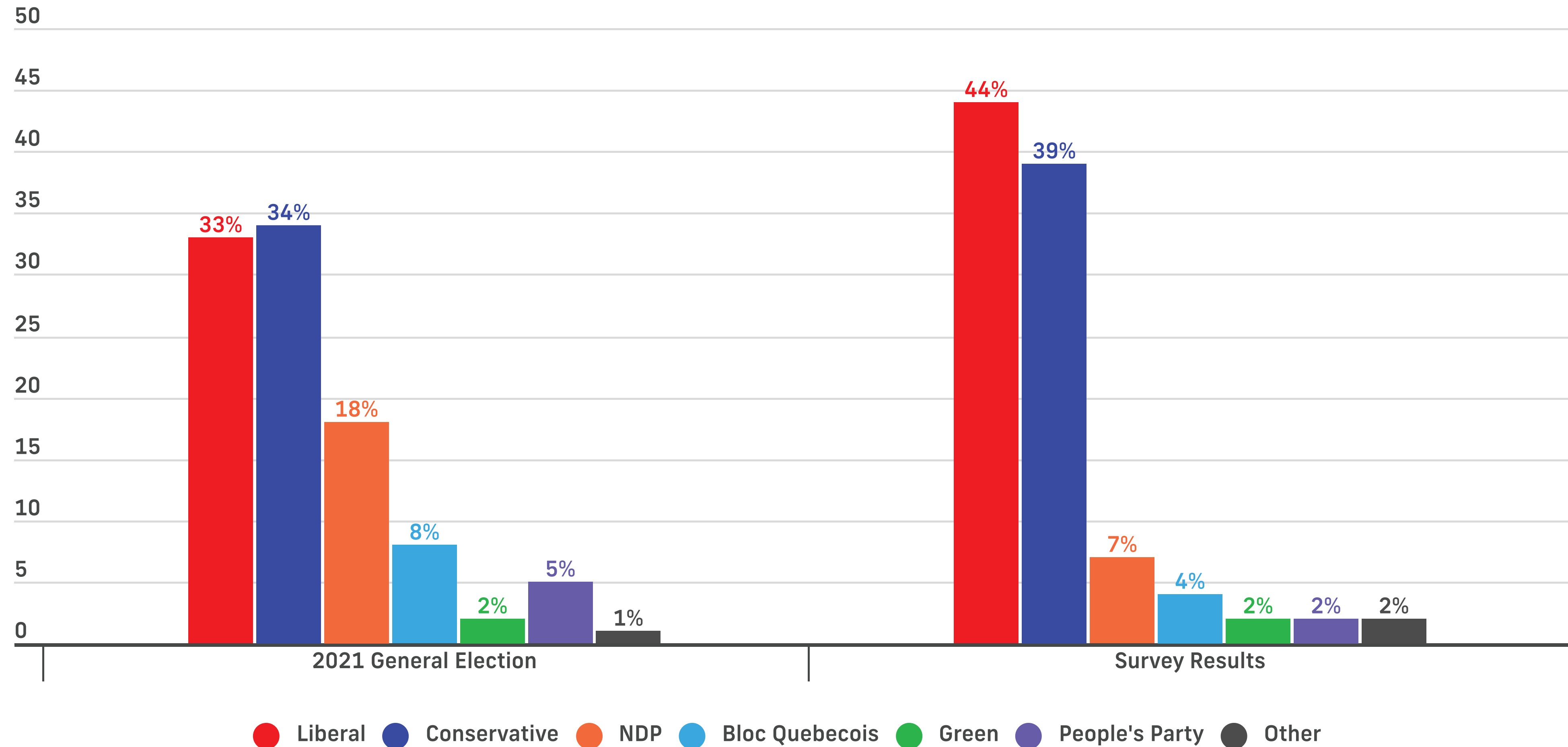


— Liberal Party led by Mark Carney — Conservative Party led by Pierre Poilievre — NDP led by Jagmeet Singh  
— Bloc Québécois led by Yves-François Blanchet — Green Party led by Elizabeth May  
— People's Party led by Maxime Bernier — Other Party or Candidate — Undecided



## Voting Intent - Federal - Decided & Leaning Only

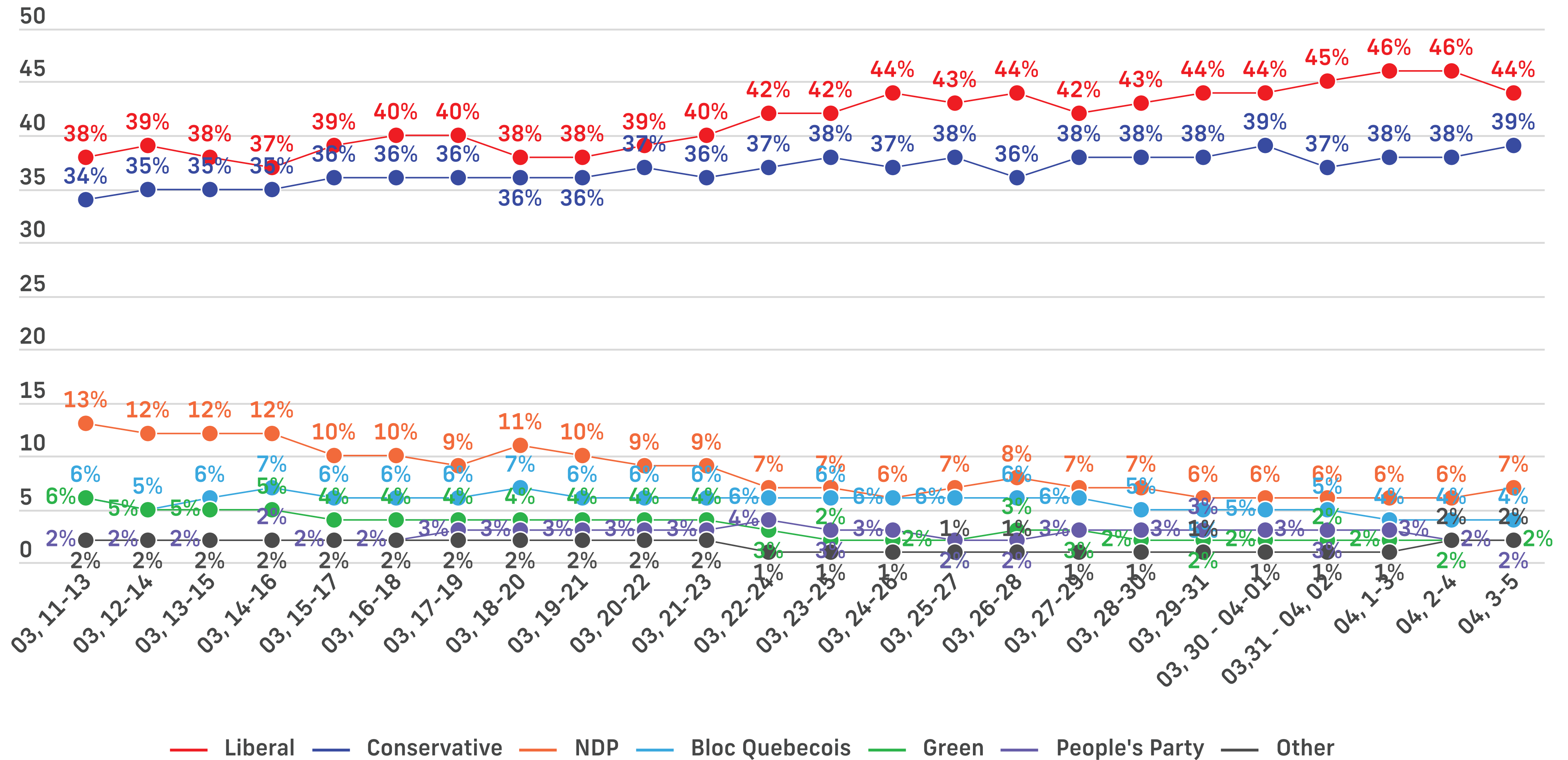
Q: If a Federal Election were held today, which party would you vote for?  
& (Undecided Only): And which party are you leaning towards?





# Voting Intent - National - Decided & Leaning Only

Q: If a Federal Election were held today, which party would you vote for?  
& (Undecided Only): And which party are you leaning towards?





## Voting Intent - National

*Q: If a Federal Election were held today, which party would you vote for?  
Undecided Only: And which party are you leaning towards?*

### All Voters

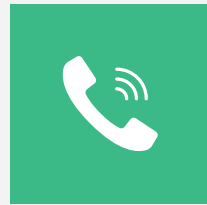
|  | All  | Female | Male | Other | 18-34 | 35-49 | 50-64 | 65+ | ATL | QC  | ON  | MB/SK | AB  | BC  |
|--|------|--------|------|-------|-------|-------|-------|-----|-----|-----|-----|-------|-----|-----|
| Liberal Party led by Mark Carney             | 42%  | 45%    | 38%  | 43%   | 39%   | 38%   | 45%   | 45% | 52% | 43% | 44% | 32%   | 30% | 42% |
| Conservative Party led by Pierre Poilievre   | 37%  | 35%    | 40%  | 38%   | 41%   | 39%   | 35%   | 35% | 35% | 24% | 40% | 46%   | 52% | 36% |
| NDP led by Jagmeet Singh                     | 7%   | 6%     | 7%   | 8%    | 8%    | 7%    | 6%    | 5%  | 5%  | 5%  | 6%  | 8%    | 7%  | 12% |
| Bloc Québécois led by Yves-François Blanchet | 4%   | 4%     | 5%   | 2%    | 3%    | 5%    | 5%    | 4%  | -   | 18% | -   | -     | -   | -   |
| Green Party led by Elizabeth May             | 1%   | 1%     | 1%   | 0%    | 1%    | 3%    | 0%    | 1%  | 2%  | 1%  | 1%  | 1%    | 2%  | 0%  |
| People's Party led by Maxime Bernier         | 2%   | 1%     | 2%   | 2%    | 1%    | 1%    | 3%    | 2%  | 1%  | 1%  | 2%  | 2%    | 1%  | 2%  |
| Other Party or Candidate                     | 2%   | 2%     | 1%   | 2%    | 1%    | 2%    | 1%    | 2%  | 1%  | 1%  | 2%  | 3%    | 1%  | 1%  |
| Undecided                                    | 6%   | 6%     | 5%   | 5%    | 5%    | 6%    | 6%    | 5%  | 4%  | 7%  | 5%  | 8%    | 7%  | 7%  |
| Sample (Unweighted)                          | 1500 | 735    | 693  | 72    | 400   | 363   | 385   | 352 | 100 | 346 | 581 | 98    | 165 | 210 |
| Weighted                                     | 1500 | 732    | 697  | 71    | 400   | 364   | 382   | 354 | 101 | 347 | 581 | 96    | 166 | 209 |

### Decided & Leaning

|  | All  | Female | Male | Other | 18-34 | 35-49 | 50-64 | 65+ | ATL | QC  | ON  | MB/SK | AB  | BC  |
|--|------|--------|------|-------|-------|-------|-------|-----|-----|-----|-----|-------|-----|-----|
| Liberal Party led by Mark Carney             | 44%  | 47%    | 41%  | 47%   | 41%   | 41%   | 48%   | 48% | 55% | 45% | 46% | 34%   | 33% | 46% |
| Conservative Party led by Pierre Poilievre   | 39%  | 37%    | 42%  | 39%   | 44%   | 40%   | 36%   | 36% | 35% | 27% | 42% | 49%   | 56% | 37% |
| NDP led by Jagmeet Singh                     | 7%   | 7%     | 8%   | 8%    | 8%    | 8%    | 7%    | 6%  | 5%  | 5%  | 6%  | 10%   | 7%  | 13% |
| Bloc Québécois led by Yves-François Blanchet | 4%   | 4%     | 5%   | 2%    | 3%    | 5%    | 5%    | 4%  | -   | 19% | -   | -     | -   | -   |
| Green Party led by Elizabeth May             | 2%   | 2%     | 1%   | 0%    | 1%    | 3%    | 1%    | 1%  | 2%  | 2%  | 1%  | 2%    | 3%  | 1%  |
| People's Party led by Maxime Bernier         | 2%   | 2%     | 2%   | 2%    | 1%    | 1%    | 3%    | 2%  | 1%  | 1%  | 2%  | 2%    | 1%  | 2%  |
| Other Party or Candidate                     | 2%   | 2%     | 1%   | 2%    | 1%    | 2%    | 1%    | 2%  | 1%  | 1%  | 2%  | 3%    | 1%  | 2%  |
| Sample (Unweighted)                          | 1472 | 715    | 687  | 70    | 398   | 355   | 373   | 346 | 98  | 340 | 570 | 96    | 161 | 207 |
| Weighted                                     | 1471 | 718    | 683  | 70    | 393   | 355   | 374   | 349 | 100 | 337 | 572 | 95    | 163 | 206 |

# GET IN TOUCH

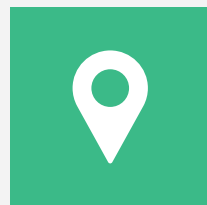
---



+1 416-483-2335



[liaison.ca](http://liaison.ca)



2586A Yonge Street, Suite 2B  
Toronto, Ontario, Canada

