



BRITISH COLUMBIA

BC Survey for the **National Ethnic Press and
Media Council of Canada**

Field Dates: June 26-27

Release Date: July 8, 2024



Liaison surveyed a random sample of 1,097 British Columbia voters through Interactive Voice Recording (IVR) from June 26-27, 2024

Responses were weighted using demographic and geographic information to targets based on the 2021 Census.

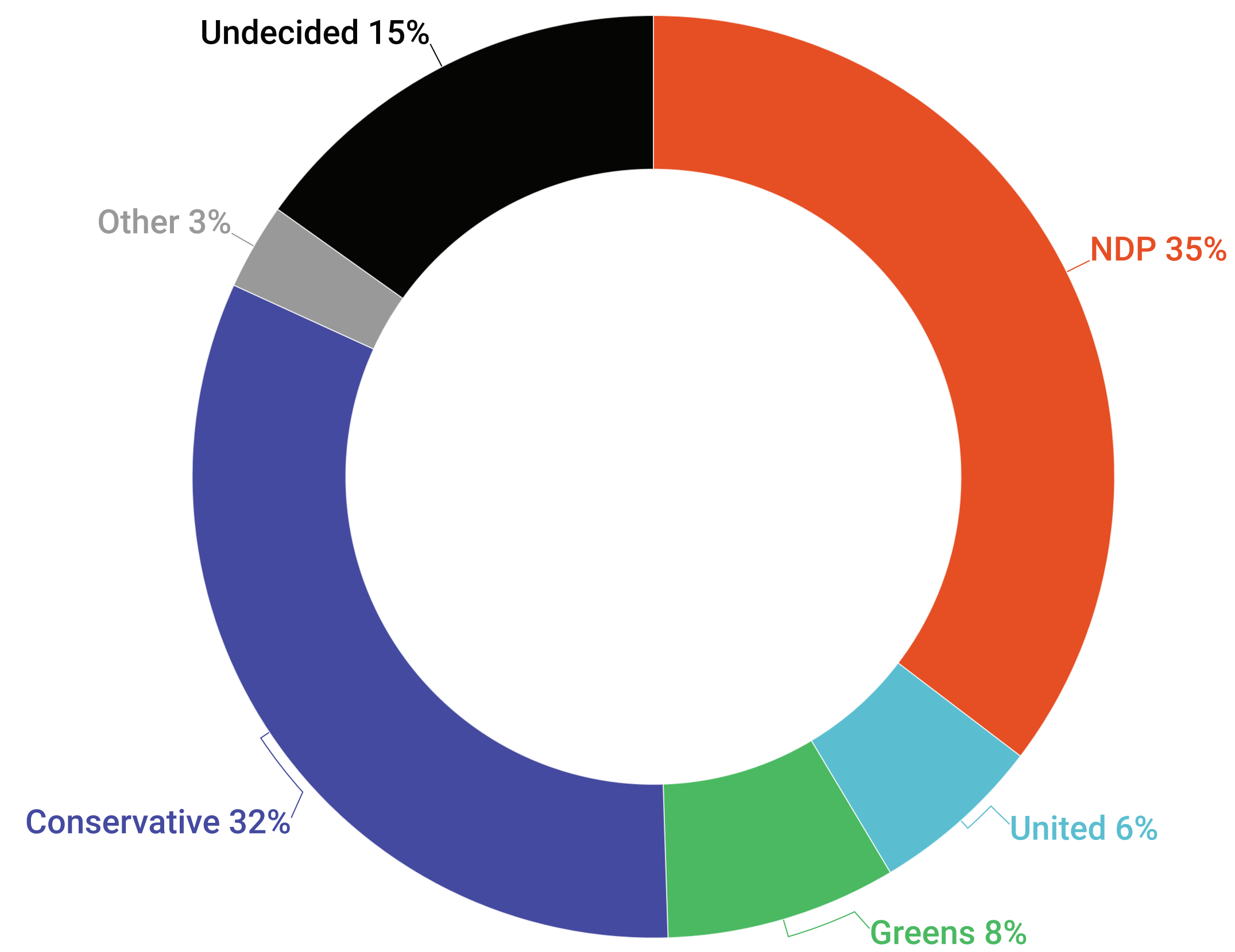
The margin of error for survey results is ± 2.96 percentage points, 19 times out of 20 for the total. Margins of error are higher for sub samples.

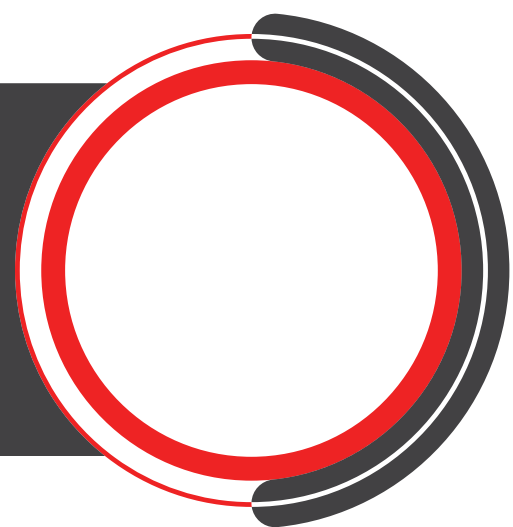
Results may not add up to 100 due to rounding.



Voting Intent - British Columbia

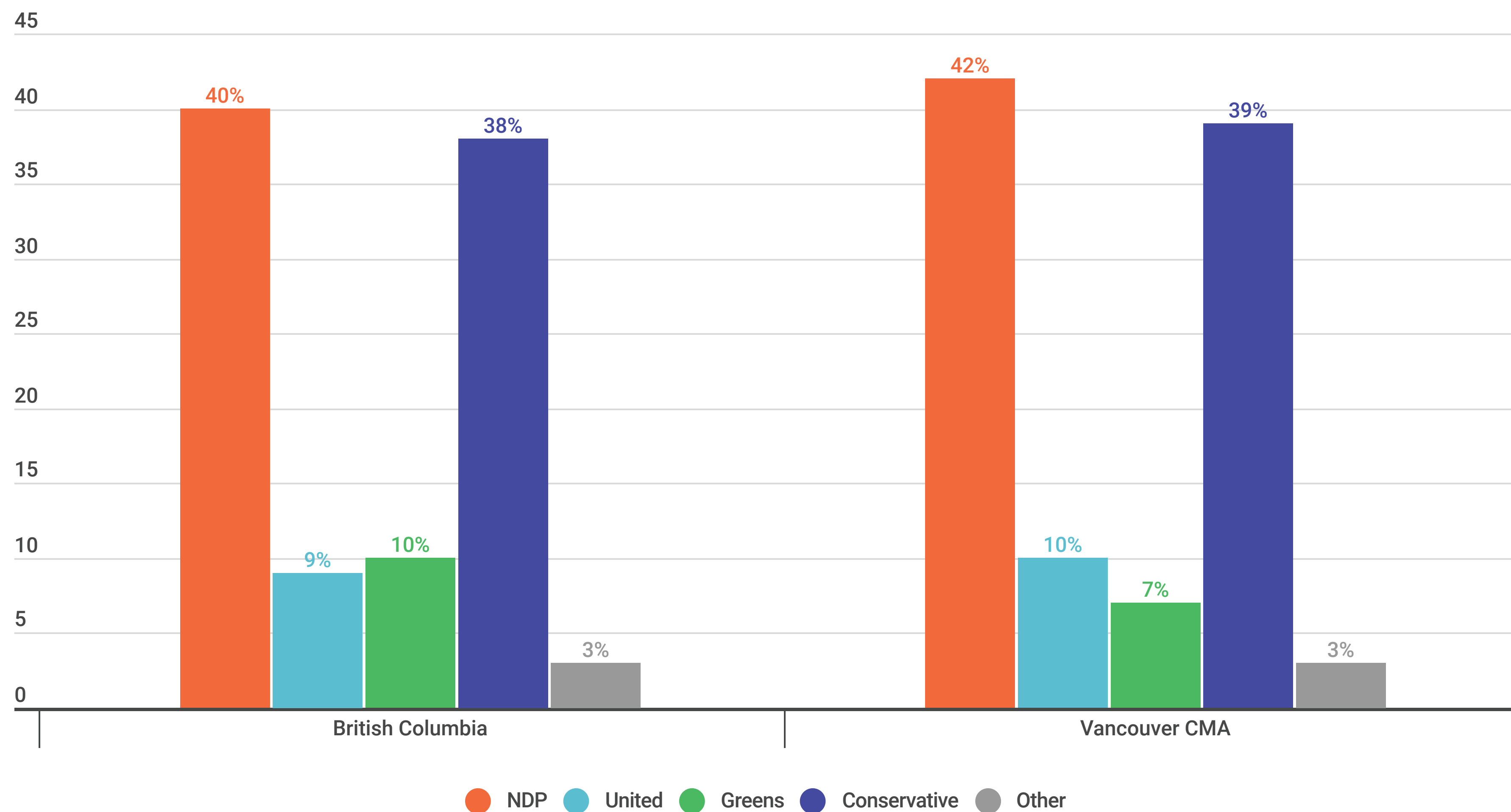
Q: If a Provincial Election were held today, which party would you vote for?





Voting Intent - British Columbia - Decided & Leaning Only

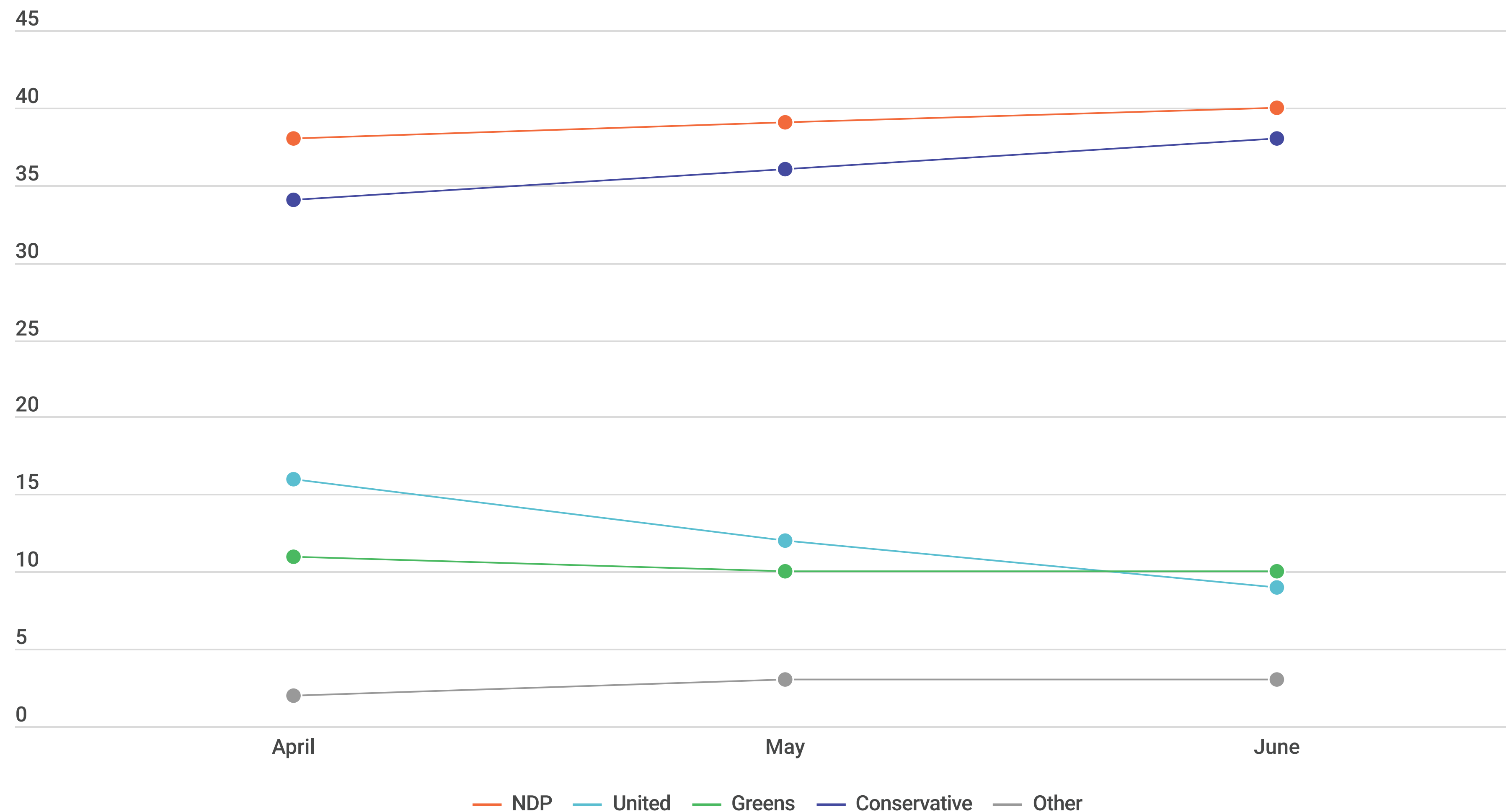
*Q: If a Provincial Election were held today, which party would you vote for?
(Undecided Only): And which candidate are you leaning towards?*





Voting Intent - British Columbia - Decided & Leaning Only

*Q: If a Provincial Election were held today, which party would you vote for?
(Undecided Only): And which candidate are you leaning towards?*





Voting Intent - Provincial

Q: If a Provincial Election were held today, which party would you vote for?

All Voters

	All	Female	Male	Other	18-34	35-49	50-64	65+	Vancouver CMA	Vancouver Island	Remainder of BC
NDP	35%	40%	30%	23%	27%	33%	38%	42%	38%	37%	28%
United	6%	5%	8%	5%	4%	5%	5%	11%	6%	7%	6%
Greens	8%	9%	7%	16%	18%	6%	5%	3%	5%	21%	6%
Conservative	32%	27%	39%	23%	39%	33%	33%	25%	33%	17%	42%
Other	3%	3%	2%	11%	1%	5%	4%	2%	3%	2%	3%
Undecided	15%	16%	14%	23%	10%	18%	16%	16%	14%	16%	15%
Sample (Unweighted)	1097	571	501	25	262	261	266	308	505	304	288
Weighted	1097	552	523	22	290	261	276	270	617	204	276

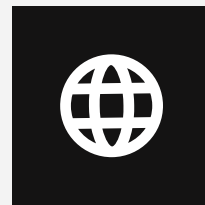
Decided & Leaning

	All	Female	Male	Other	18-34	35-49	50-64	65+	Vancouver CMA	Vancouver Island	Remainder of BC
NDP	40%	45%	34%	28%	29%	39%	44%	49%	42%	43%	33%
United	9%	9%	9%	6%	6%	7%	9%	14%	10%	8%	8%
Greens	10%	11%	9%	19%	20%	8%	6%	5%	7%	23%	8%
Conservative	38%	32%	45%	33%	44%	42%	37%	30%	39%	24%	48%
Other	3%	4%	2%	14%	1%	5%	4%	2%	3%	3%	4%

GET IN TOUCH



+1 416-483-2335



info@liaisonstrategies.ca



2586A Yonge Street, Suite 2B
Toronto, Ontario, Canada

